



Specifications

Rating: Max : 2A / 36 VDC ; Min : 0.5A / 12 VDC.
 Electronics Life: 200,000 make-and-break cycles at full load.
 Mechanical Life: 1,000,000 cycles.
 Insulation Resistance: 1,000 MΩ min. at 500 VDC.
 Dielectric Strength: 2,000V RMS @ sea level (initial value).
 Contact Resistance: 50 mΩ max. (without wire leads).
 Note: When the switches with the wire assembly, we only test the electric conduction and will not test the contact resistance on the wire.
 Operating Temperature: -20°C to +70°C.
 Travel: About 2.0 ± 0.20 mm.
 Operating Pressure: 4.5 N ± 1.5 N.
 Torque: 11.5 kgf · cm.

Ingree Protection: IP67 (In house test)



Materials

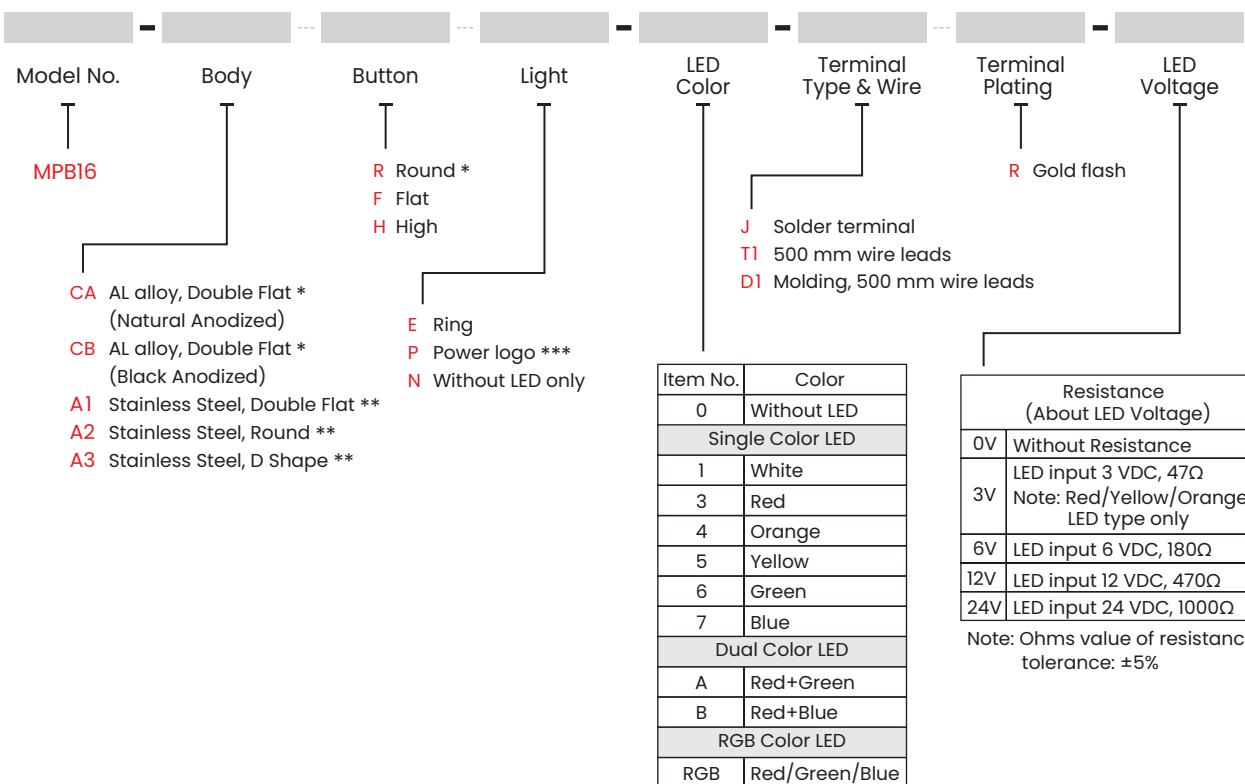
Bushing: Aluminum Alloy / Stainless Steel.
 Base: PBT (UL 94 V-0).
 Actuator: PC (Translucent) (UL 94 V-2).
 Cap: Aluminum alloy / Stainless Steel.
 Spring: Steel.
 Sealing: Silicone (Translucent).
 O-Ring: Silicone (Translucent).
 Terminal: Brass, Gold flash plated.
 Contact: Brass, Coin silver, Gold flash plated.
 Hex Nut: Brass (Nickel plated).
 Wire: Standard wire UL 3385 - 20 AWG, molding type wire - 22 AWG.

Soldering Process

Manual Soldering: Use 60 watts soldering iron and controlled the temperature at 280°. Duration of solder immersion: Max. 3 sec.

HOW TO ORDER

Note: Specifications and availability subject to change without notice.



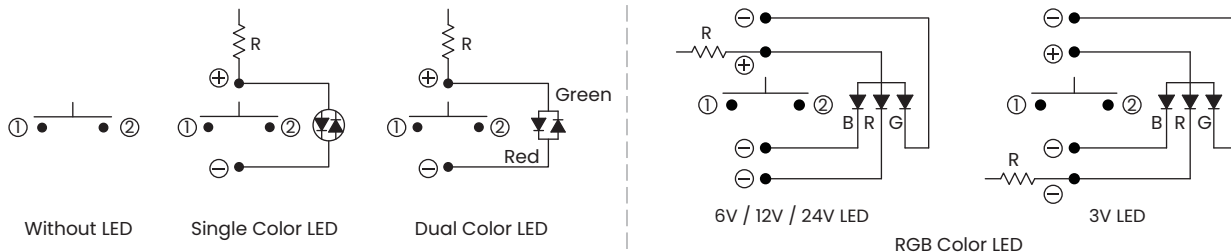
EXAMPLE:
 MPB16-CARE-0-JR-0V (Without LED)
 MPB16-CARE-□-JR-□V
 □ LED Voltage
 □ LED Color

- * Aluminum alloy body types are only available with button type R.
- ** Stainless steel body types are only available with button types F and H.
- *** Not applicable for button type H.



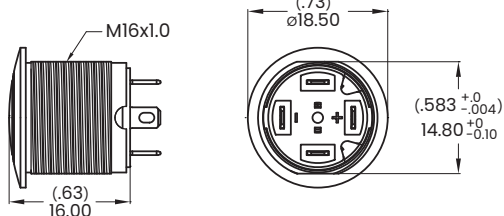
▼ **CIRCUIT**

Note: According to the input voltage adjustment resistance.

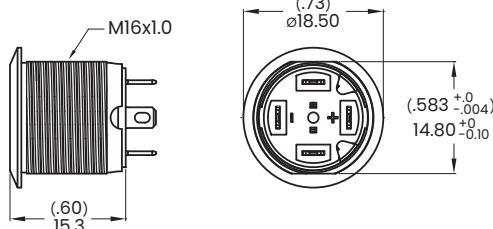


▼ **BODY OPTIONS**

CA / CB Double Flat

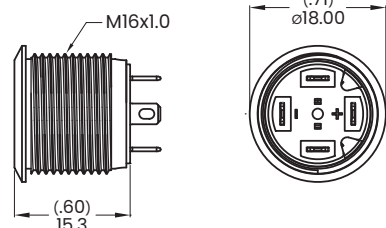


A1 Double Flat

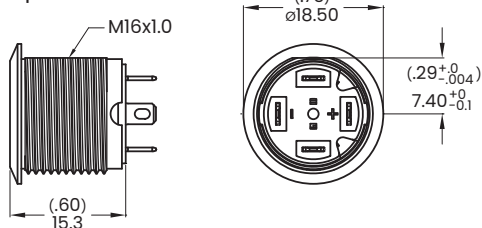


Note: Available with round button only

A2 Round



A3 D Shape

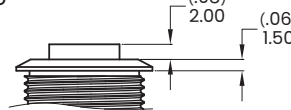


▼ **BUTTON OPTIONS**

R Round



H High *



F Flat *

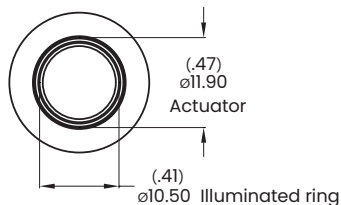


Note: Available with body types CA and CB only.

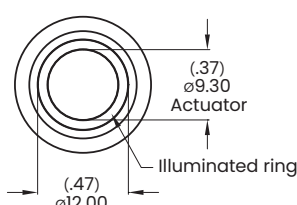
* Note: Available with body types A1-A3 only.

▼ **LIGHT OPTIONS**

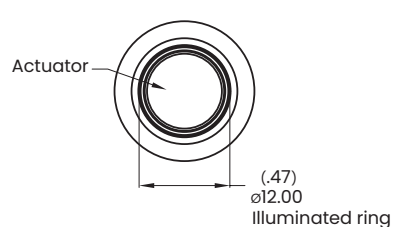
E Ring



Round Button



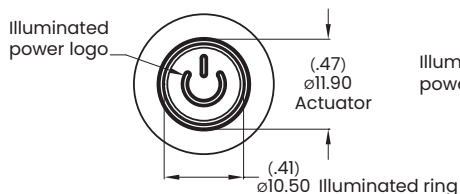
High Button



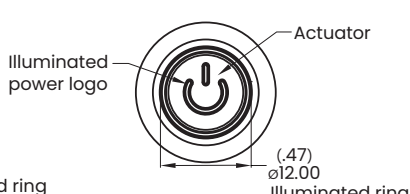
Flat Button

P Power logo

Note: Not applicable for button type H.

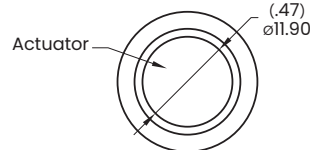


Round Button



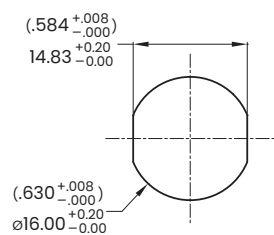
Flat Button

N Without LED

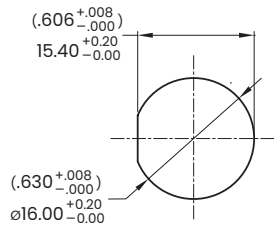




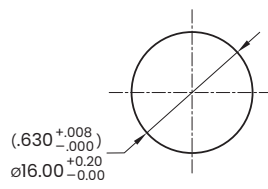
▼ PANEL MOUNTING



Double Flat



D Shape

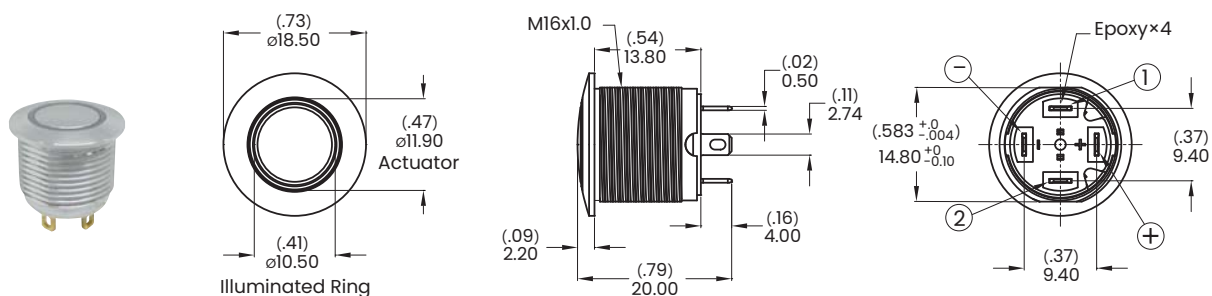


Round

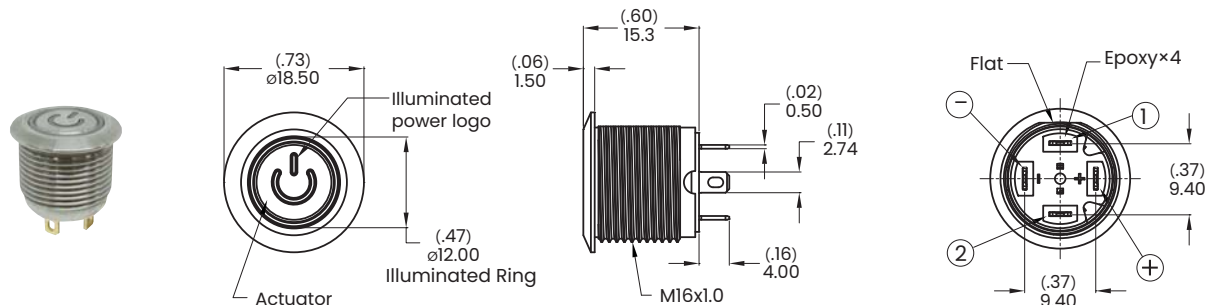
Panel thickness:
8.0 mm (.031 inch) MAX.

MPB16
Pushbutton Switches

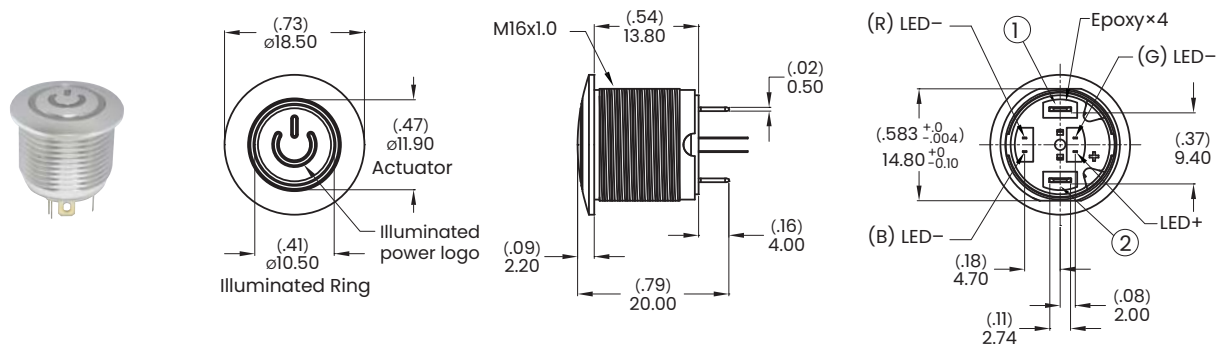
▼ DIMENSION



Model name. MPB16-CARE-1-JR-0V



Model name. MPB16-A3FP-1-JR-0V



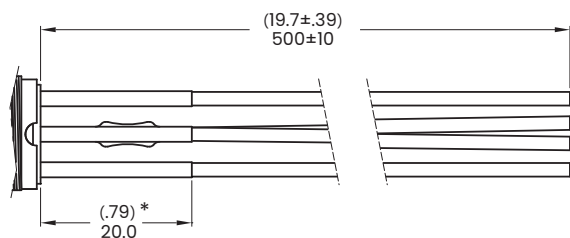
Model name. MPB16-CARP-RGB-JR-0V



▼ **WIRE OPTIONS**

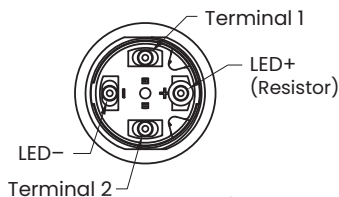
Note: Please consult sales for additional wire options.

T1 500 mm wire leads, 20 AWG



Heat shrink tube

*Note: No external resistance heat shrink sleeve 10 mm (.39inch).



Wires:

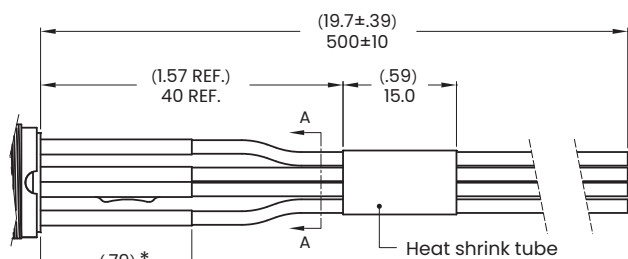
Black wire - Terminals

Red wire - LED (+)

Green wire - LED (-)

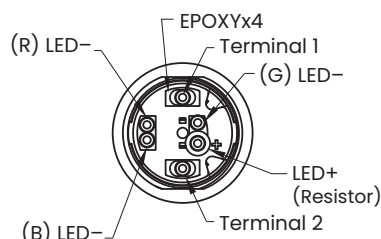
Note: No LED terminals is black wires.

T1 500 mm wire leads, 20 AWG (RGB LED)



Heat shrink tube

*Note: No external resistance heat shrink sleeve 10 mm (.39 inch).



SECTION A-A

Wires:

Black wire - Terminals

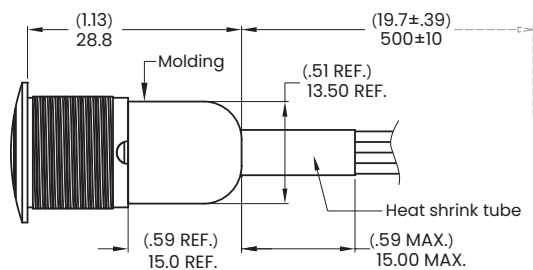
White wire - LED (+)

Red wire - (R) LED (-)

Blue wire - (G) LED (-)

Green wire - (B) LED (-)

D1 Molding, 500 mm wire leads, 22 AWG



Heat shrink tube

Wires:

Black wire - Terminals

Red wire - LED (+)

Green wire - LED (-)

Note: No LED terminals is black wires.

RGB LED Wires:

Black wire - Terminals

White wire - LED (+)

Red wire - (R) LED (-)

Blue wire - (G) LED (-)

Green wire - (B) LED (-)

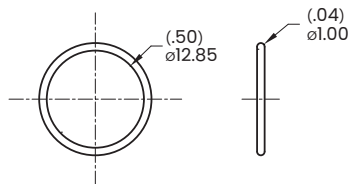
▼ **HARDWARE**

* Standard hardware : 1 Nut, 1 O-Ring

* For further information please consult sales representative.

O-Ring

Model name. FCP-MP602



Hex Nut

Model name. MNU-PY01

