



**SPECIFICATIONS**

**RATING** : 50mA 12VDC.  
**OPERATION LIFE** : 500,000 Cycles.  
**INSULATION RESISTANCE** : 100 MΩ Min. at 500VDC.  
**DIELECTRIC STRENGTH** : 500V RMS@sea level.  
**CONTACT RESISTANCE** : 100mΩ Max.@1A/12VDC(Initial value)  
**OPERATION TEMPERATURE** : -40°C~+85°C  
**TRAVEL**: About 3.0±0.3mm.  
**OPERATION PRESSURE** : 300gf±150gf.  
**INGRESS PROTECTION** : IP67(In house test)  
**TORQUE** : 11.5 kgf · cm

**MATERIALS**

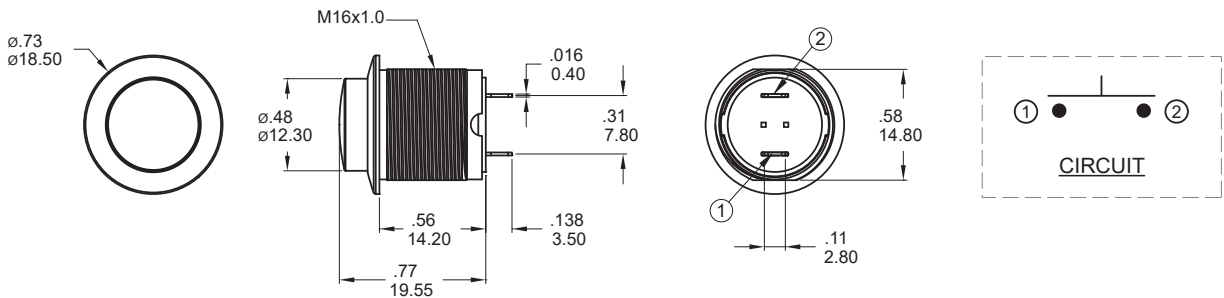
**BUSHING** : Aluminum alloy, Black.  
**BASE** : PA66.  
**ACTUATOR** : PC.  
**CAP** : PA66, Black.  
**SPRING** : Steel.  
**O-Ring** : NBR(Black).  
**TERMINAL** : Brass, Gold flash plated.  
**CONTACT** : Brass, Gold flash plated.  
**NUT** : SPCC(Nickel Plated).

**HOW TO ORDER**

MODEL NO.	BODY MATERIAL	BODY TYPE	BUTTON TYPE	LED	TERMINAL TYPE	TERMINAL PLATING
MPF16	CD AL alloy Black Anodized	1 Double flat	HR High Round	N Without LED	J Solder terminal	R Gold flash

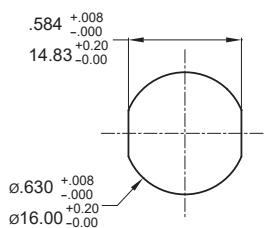
EXAMPLE:  
MPF16-CD1HRN-JR (STD)

**▼ DIMENSION**



Model name. MPF16-CD1HRN-JR

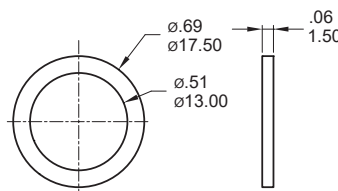
**▼ PANEL MOUNTING & HARDWARE**



Panel thickness: .315inch(8mm)

\* Standard hardware : 1 nut, 1 O-ring  
 \* For further information please consult sales representative.

**O-RING (Std.)**  
 Model name. FCP-MPF602



**NUT (Std.)**  
 Model name. MNU-MP601

